

Chapter 24

The 1993 Warsaw Accident

(with Michael Höhl)

24.1 The Background

On 14 September 1993, a Lufthansa Airbus A320 landed at Warsaw airport in a thunderstorm. Upon landing, none of the braking systems (air brakes, thrust reverse, wheel brakes) functioned for about nine seconds: the wheel brakes only started to function after about thirteen seconds. The aircraft ran off the end of the runway, collided with an earth bank and started to burn. Primarily because of the superb behavior of the crew, only two people died: one pilot, who died when the aircraft hit the bank, and one passenger, who was unconscious in the front corner and unnoticed in the evacuation as the cabin filled with smoke, and was asphyxiated. It became clear that the logic of the braking systems was indeed a reason why the braking systems hadn't functioned as expected. However, many commentators focused upon this factor as *the* main cause of the accident, which is probably incorrect. There were many other necessary causal factors (see Section 24.9). The final report itself ascribed pilot decisions and behavior as 'probable cause'. But what criteria are being used to determine this? The final report and commentary may be found in [Lad]. We analyse report here using the Lewis semantics applied solely to the facts and events noted in the report.

24.2 The Narrative

The first author analysed the text of the report to pick out the relevant states and events concerning the accident. The report yielded the following, which we call the *narrative*. The report pages on which the assertions are to be found are included:

- a) One pilot was killed because he collided with the cockpit interior elements

(p21).

- b) The collision occurred because of the impact of the aircraft with the embankment (p21).
 - c) One passenger was killed because he was intoxicated with carbon oxide (p21) and was unable to leave his seat (p23) and could not draw attention to himself (p23).
 - d) The carbon oxide was produced by the burning aircraft (p21).
 - e) The passenger could not leave his seat because of severe fractures (p23).
 - f) He could not draw attention to himself because he lost consciousness (p23).
 - g) He lost consciousness in effect of the impact (p23) and the promptly growing smoke (p23).
 - h) The aircraft sustained damage caused by fire (p7) and by the collision with the embankment (p20).
 - i) The fire was caused by the collision with the embankment (p22).
 - j) The aircraft collided with the embankment because it did not stop on the runway (p7).
 - k) The aircraft did not stop because the runway was too short for the increased speed (p38) and the aircraft computer delayed the deployment of spoilers and thrust reversers by 9 (nine) seconds (p7) and the braking commenced with the delay of additional 4 (four) seconds (p9) and the deceleration decreased by 30 last 180 m of the runway (p9).
 - l) The increased speed of 20 kts was the crew's action (p32).
 - m) The reasons for the crew's action were the towers' warning of windshear (p31) and its conformity with the flight manual instructions (p32).
 - n) The reason for the warning was the report of windshear by the preceding aircraft (p27).
 - o) The windshear was caused by a front passing through the aerodrome area (p7).
 - p) The deployment delayed because the aircraft touched the runway with the landing gear very lightly and did not compress the left landing gear leg sufficiently (p9) (DESIGN).
-

- q) The braking delayed because the wheel brakes depend on wheel rotation being equivalent of a circumferential speed of 72 kts (p9) (DESIGN) and because the crew used full flaps which disabled the braking system until the recorded touchdown (p32) (DESIGN).
- r) The deceleration decreased because a layer of water on the runway resulted in aquaplaning (p24).
- s) The runway was covered with water because of heavy rainfall by a front passing through the aerodrome area (p7).

24.3 Analysis of the Narrative

It should be clear that some assertions in the narrative are conjunctions of many events and states, and also causal assertions. We separated the events and states, and also considered the causal assertions, to obtain the textual form of the WB-Graph below.

24.4 The WB-Graph

As in Section 23, we constructed the WB-Graph in two steps:

- Prepare a textual version of the graph with path numberings;
- Draw the graph itself using the information and path numberings in the textual version

The decisions to be made to turn the narrative of events and states into a WB-graph (textual form) are simply the decisions as to which events and states are causal factors for which other events and states. We make these decisions as before using the Lewis semantics for causal factors and proceeding via a *backwards-chronological* lazy search (to use big words). Accordingly, we start with the accident event (defined standardly as significant damage to the aircraft, or serious injury or loss of life) and ask which events and states were causal factors.

24.5 The Textual Form of the WB-Graph

The textual form of the graph was prepared as for Cali in Section 23. The textual form is as follows:

WHY	BECAUSE	DESCRIPTION
-----	---------	-------------

[0]	/*	accident	*/
-----	----	----------	----

```

                                not usual
                                // ??? */

[3.1.1.1.1.1.5] [<3.1.1.1.1.2>] /* (CRW's conformance) */

<3.1.1.2> <-.1> /* CRW's actions
                // #ACTION# */
{3.1.1.3} /\{-.1} /* potential cause: wheel braking delayed */
                /\{-.2} /* potential cause: speed brakes and thrust reverser
                deployment delayed */

{3.1.1.3.1} \{-.1} /* aquaplaning */

                {3.1.1.3.1.1} /\<-.1> /* RWY very wet */
                /\{3.1.1.1} /* (speed of AC) */
                /\<-.3> /* low weight on each main gear wheel */

                <3.1.1.3.1.1.1> /\<-.1> /* weather conditions */
                /\<-.2> /* amount of water on RWY surface */
                /\<-.3> /* condition of RWY surface */

                <3.1.1.3.1.1.3> {3.1.1.1} /* (speed of AC) */

{3.1.1.3.2} /\<3.1.1.3.1.1.3> /* (low weight on main gear wheel) */
                /\<-.2> /* braking system's logical design */
                /\<-.3> /* divergence between consequences of design and
                behaviour expected by CRW */
                /\[-.4] /* actual landing */

<3.1.1.3.2.3> <-.1> /* behavior expected by CRW */

                <3.1.1.3.2.3.1> /\<-.1> /* 'normal' behavior expected by CRW */
                /\<-.2> /* CRW's training at Lufthansa
                // ??? */
                /\<-.3> /* Lufthansa procedures
                // ??? */

[3.1.1.3.2.4] {3.1.1.1.1} /* (CRW's actions) */

<3.1.2> [<-.1>] /* built by airport authority for radio equipment */

<3.2> [3.1]

Glossary: AC Aircraft
          CRW Crew
          RWY Runway

```

24.6 The WB-Graph and its Semi-Components

We call a part of a graph a *semi-component* if its ‘connection’ to the rest of the graph passes only through ‘narrow’ connections. This is a visual judgement rather than a mathematical definition. We anticipate that the reader will be able to see from the whole graph and our division into three semi-components exactly how we use the concept.

The *dot* graph-drawing tool from Lucent-Bell Labs was used to produce the WB-Graphs. The tool enabled us easily to divide the complete graph into three readable semi-components, and color the ‘connecting nodes’ of these semi-components to make them easily identifiable across semi-component diagrams.

The overall structure of the WB-graph for this accident is given in Figure 24.1. We observe that this graph can be broken down into three main sections along the ‘bottlenecks’. The ‘top’ section is shown in Figure 24.2 (The other two components are Figures 24.3 (the middle section) and 24.4 (the lower section).

The nodes that ‘join’ two of these almost-components are included in both relevant figures.

One can immediately observe from Figure 24.2 that node *3.1.2: earth bank in overrun path* is a causally-necessary node: hitting the bank was a cause of the damage and fire; the hit directly killed one person and rendered the other unconscious and therefore unable to participate in the evacuation. The node is caused only by node *3.1.2.1: built by airport authority for radio equipment*. This node in turn is not caused by any other event or state in the sequence. It is therefore to be counted amongst the ‘original causes’ of the accident, according to the WB-graph method. However, it does not appear amongst the ‘probable causes’ or ‘contributing factors’ of the final report. We have therefore found a reasoning mistake in the report. It is not the only such node of which this is true.

24.7 The Source Nodes

The source nodes (nodes that are causal factors of others, but themselves are not regarded as having significant causal factors) are:

```
{2.1.2.2}          /* unnoticed during evacuation (for many reasons) */
{3.1.1.1.1.2}      /* CRW's conformance with recommended procedures
                   in case of windshear */
[3.1.1.1.1.1.2]    /* report of windshear from preceding AC */
<3.1.1.1.1.1.1.1>  /* front was passing through */
{3.1.1.1.1.1.3.1}  /* weather reporting system */
<3.1.1.1.1.1.4.2>  /* no ATC advice given on currency of report */
<3.1.1.1.1.1.4.1.1> /* usual (reporting) arrangement at European airport */
<3.1.1.1.1.1.4.1.2> /* expectation of advice if (weather reporting)
                   procedure not usual
                   // ??? */
<3.1.1.2.1>       /* CRW's actions (handling on approach)
```

```

// #ACTION# */
<3.1.1.3.1.1.1.2> /* amount of water on RWY surface */
<3.1.1.3.1.1.1.3> /* condition of RWY surface */
<3.1.1.3.2.2> /* braking system's logical design */
<3.1.1.3.2.3.1.1> /* 'normal' behavior expected by CRW */
<3.1.1.3.2.3.1.2> /* CRW's training at Lufthansa
// ??? */
<3.1.1.3.2.3.1.3> /* Lufthansa procedures
// ??? */
{3.1.2.1} /* earth bank built by airport authority for radio
equipment */

```

We consider them in turn.

- (2.1.2.2) That the unconscious passenger was unnoticed is probably due to the obscurity of the cabin air as it filled with smoke and the speed with which the cabin had to be evacuated. Furthermore the passenger was motionless, noiseless and being seated in the very front corner of the airplane. One imagines that procedures might be developed to prevent this happening (not precluding technical solutions, such as body sensors in the cabin). This is not strictly a source node, but is the specific consequence of unspecific and presumed factors. Therefore it is for us a better choice of causal factor than the unspecific list of presumed factors listed under (2.1.2.2.1);
 - (3.1.1.1.1.2) CRW's conformance with recommended procedures in case of windshear. One could consider the recommended procedures, and our information is that this led to deep discussions and consideration of the issue between Lufthansa, the Luftfahrtbundesamt (the German Government authority for air travel), and Airbus;
 - [3.1.1.1.1.2] The report of windshear from the previous aircraft is presumably not considered worth grounding further because it is presumed to be veridical;
 - <3.1.1.1.1.1> That the front was passing through at the time of landing is a major contributing factor. And of course it cannot be ameliorated except through modifying procedures: there always was bad weather and there will always be;
 - (3.1.1.1.1.3.1), <3.1.1.1.1.4.2>, <3.1.1.1.1.4.1.1>, <3.1.1.1.1.4.1.2> The weather reporting system in use, its contrast with the 'usual' reporting system and the lack of ATC advisory on the currency of the report was the subject of recommendations made in the accident report to the weather reporting authorities;
-

- *⟨3.1.1.2.1⟩* The pilots' handling of the aircraft on approach could have consequences for modifying pilot training procedures: that they flew a relatively unstabilised approach to a landing in such conditions is a question of judgement which line pilots and their trainers can always profitably discuss;
 - *⟨3.1.1.3.1.1.2⟩, ⟨3.1.1.3.1.1.3⟩* The amount of water on the RWY surface, and the condition of the surface were causal factors that led to no recommendations on the part of the final report, because it was (mistakenly, as we have thus shown) not considered a 'probable cause' or 'contributory factor'. We consider this an omission. A runway surface is a crucial piece of safety equipment and there had been some concern that the runway surface at Warsaw, like the weather reporting, did not conform to reasonable European expectations of performance. At the minimum, one could call for an evaluation;
 - *⟨3.1.1.3.2.2⟩* Our understanding is that the logical design of the braking system on this particular airplane has been modified. Airbus Industrie is known to be responsive in this manner to customer concerns following incidents - indeed, this is regarded by some as a major advantage of software-based automation. We understand that a customer-initiated modification to the squat-switch compression load and to the the decision logic has been made on all customer A320 aircraft (we also understand that the modification was available before the accident, but had not been fitted to this particular aircraft);
 - *⟨3.1.1.3.2.3.1.1⟩, ⟨3.1.1.3.2.3.1.2⟩, ⟨3.1.1.3.2.3.1.3⟩* The 'normal' landing behavior expected by the pilots, especially given Lufthansa's training and procedures, played a significant role, as emphasised also by the report. Our understanding is that there seemed to be significant divergence of opinion on whether the procedures employed and trained by Lufthansa were appropriate for the aircraft (apparently, the pilots landed one-wheel-first, a standard procedure and one trained by Lufthansa - however, the aircraft only senses main landing gear touch-down when *both* squat switches are compressed, not when one is). These issues became much better understood as a consequence of this accident, according to our information;
 - *(3.1.2.1)* Lastly, the position of the earth bank. Some have considered that building a significant physical obstacle on a runway overrun path, for any reason, is inadvisable. Most airports in Western Europe and the US operate the precision landing equipment (ILS) without such obstacles. It is beyond our competence to consider this issue further. However, we do point out that this was omitted from the list of 'probable cause' and 'contributing factors' in the report.
-

There are two fundamental causes which appear in our analysis that were not dealt with in depth by the report, and which were thus not subject to recommendations from the accident investigation committee. We consider that failure to include those two causes amongst the contributing factors (at least) is simply a mistake in reasoning, given that they were noted in the body of the report. We note that these two causes were two out of three fundamental causes (according to our WB-Method) that were under the administrative control of the Polish authorities, who are also responsible for the report. In Section 23 we noted another case in which fundamental causes (according to the WB-Graph) under administrative control of the government responsible for the accident investigation seem to have been omitted from the list of contributory factors. We draw no further conclusions from this feature, simply note that it seems to have occurred twice so far in our studies.

24.8 Conclusions

Considering the Warsaw report as an example has shown how the WB-method renders reasoning rigorous, and enables the true original causal factors to be identified from amongst all the causally-relevant states and events.

What is the consequence of the rigorous reasoning employed in the WB-Method? We have been able to identify two fundamental causes (source nodes in the WB-graph) which occurred in the report but were omitted as ‘probable cause’ or ‘contributing factors’: the position of the earth bank, and the runway surfacing. Once we have identified the position of the earth bank as an original causal factor, we know that had the bank not been where it is, the accident that happened would not have happened. (It is, of course, possible that the aircraft could have broken up and burned for some *other* reason - whether that was likely can be left to the experts to decide, but it’s certainly not as likely as in the case where there’s something there to hit!) Therefore, one could consider repositioning the bank in order to avoid a repeat. However, this was not considered or recommended in the report, we suppose because the position of the bank was not considered to be a causally-essential feature in the report. Thus, in the absence of rigorous reasoning, one runs the risk of a limited, and thus inoptimal, set of choices as to how to proceed in the future to avoid similar problems. In an ideal situation, we would think that action could be taken to compare the positioning of the bank and the condition of the runway surface with norms in Western Europe and the US, for example, where aviation is most highly developed, and to initiate supplemental advisories, procedures, or a change in conditions themselves.

So, even though press and media opinion may focus on the automated systems of the accident aircraft, or on pilot ‘*error*’, it is also true that had the aircraft had a free ‘*overrun area*’ at the end of the runway in which to slow down, the accident could have been a mere incident: unfortunate but not deadly. Also, had

the runway surfacing been otherwise, the wheel braking systems could have functioned earlier and perhaps the collision with the bank ameliorated or avoided. In a valid account of the accident, these mundane features identified as fundamental causes by the WB-Method must be noted as causal factors along with pilot and airplane behavior.

24.9 Causal Factors are Numerous

The observation that in causal explanation not just one ‘probable cause’, but normally *many* causal factors explain the occurrence of an event, and that one cannot distinguish between ‘more necessary’ and ‘less necessary’ factors, is often attributed to John Stuart Mill; for example, as quoted by Steward [Ste97]:

It is usually between a consequent and the sum of several antecedents; the concurrence of them all being requisite to produce, that is, to be certain of being followed by the consequent. In such cases it is very common to single out only one of the antecedents under the denomination of Cause, calling the others merely Conditions....The real Cause is the whole of these antecedents; and we have, philosophically speaking, no right to give the name of causes to one of them exclusively of the others.

[Mil73a, Mil73b].

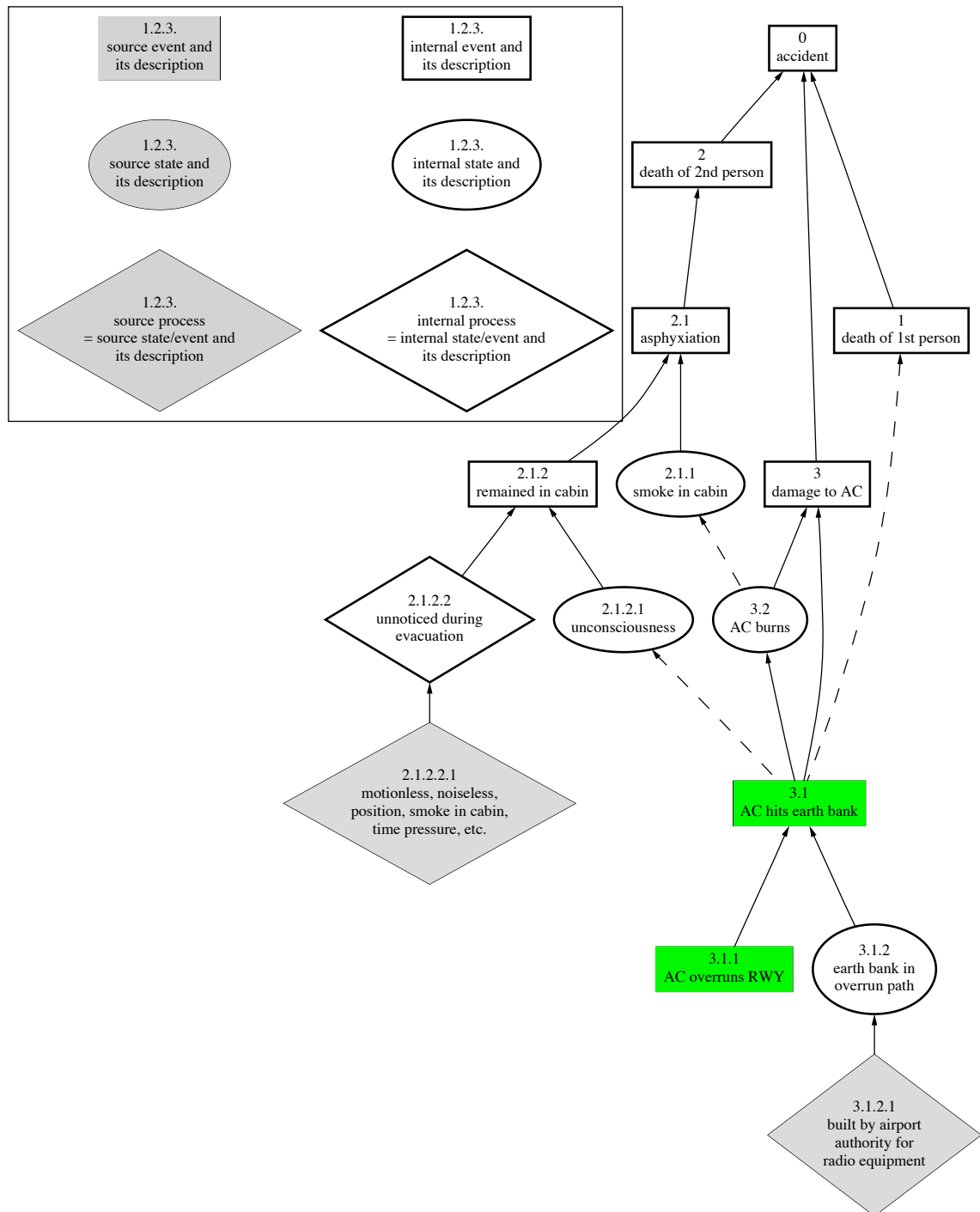


Figure 24.2: The Warsaw WB Graph – Upper Section

